

Description	Quantity	Applied to	Per
-------------	----------	------------	-----

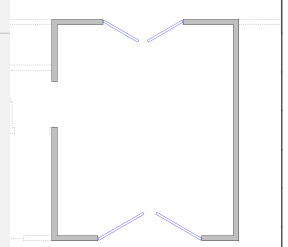
**SCHEDULE: Building - duplicate (Messenger Construction Limited - Birmingham) Claim Ref. IFS-EIG-SUB-18-007396...**

Approved

**FLOORPLAN: Floorplan**

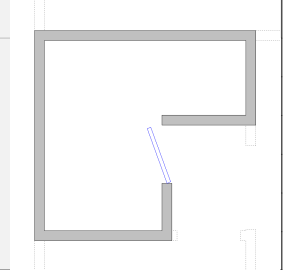
**Entrance Lobby**

<b>Length:</b> 4.07 m	<b>Width:</b> 4.87 m	<b>Height:</b> 2.40 m Flat	
<b>Walls:</b> 42.88 m2	<b>Walls-subs:</b> 31.68 m2	<b>Walls-subs-cas-skbd:</b> 30.19 m2	
<b>Doors:</b> 8.67 m2	<b>Windows:</b> 0.00 m2	<b>Openings:</b> 2.53 m2	<b>Missing Walls:</b> 0.00 m2
<b>Floor:</b> 19.79 m2	<b>Ceiling:</b> 19.79 m2	<b>Perim (F):</b> 12.58 m	<b>Perim (C):</b> 16.83 m



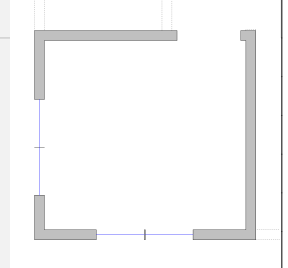
**Under Stairs Store**

<b>Length:</b> 2.52 m	<b>Width:</b> 2.38 m	<b>Height:</b> 2.40 m Flat	
<b>Walls:</b> 23.50 m2	<b>Walls-subs:</b> 22.02 m2	<b>Walls-subs-cas-skbd:</b> 20.93 m2	
<b>Doors:</b> 1.48 m2	<b>Windows:</b> 0.00 m2	<b>Openings:</b> 0.00 m2	<b>Missing Walls:</b> 0.00 m2
<b>Floor:</b> 4.47 m2	<b>Ceiling:</b> 4.47 m2	<b>Perim (F):</b> 9.07 m	<b>Perim (C):</b> 9.80 m



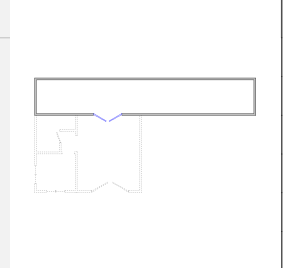
**Stairway**

<b>Length:</b> 2.52 m	<b>Width:</b> 2.36 m	<b>Height:</b> 2.40 m Flat	
<b>Walls:</b> 23.42 m2	<b>Walls-subs:</b> 18.98 m2	<b>Walls-subs-cas-skbd:</b> 17.92 m2	
<b>Doors:</b> 0.00 m2	<b>Windows:</b> 2.52 m2	<b>Openings:</b> 1.92 m2	<b>Missing Walls:</b> 0.00 m2
<b>Floor:</b> 5.95 m2	<b>Ceiling:</b> 5.95 m2	<b>Perim (F):</b> 8.96 m	<b>Perim (C):</b> 8.96 m



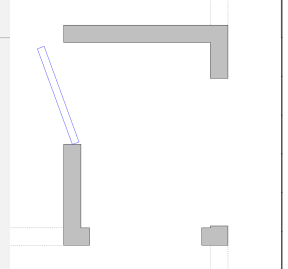
**Main Hallway**

<b>Length:</b> 14.10 m	<b>Width:</b> 2.17 m	<b>Height:</b> 2.40 m Flat	
<b>Walls:</b> 78.10 m2	<b>Walls-subs:</b> 74.32 m2	<b>Walls-subs-cas-skbd:</b> 70.66 m2	
<b>Doors:</b> 3.78 m2	<b>Windows:</b> 0.00 m2	<b>Openings:</b> 0.00 m2	<b>Missing Walls:</b> 0.00 m2
<b>Floor:</b> 30.61 m2	<b>Ceiling:</b> 30.61 m2	<b>Perim (F):</b> 30.69 m	<b>Perim (C):</b> 32.54 m



**Lobby**

<b>Length:</b> 0.92 m	<b>Width:</b> 1.32 m	<b>Height:</b> 2.40 m Flat	
<b>Walls:</b> 10.78 m2	<b>Walls-subs:</b> 4.85 m2	<b>Walls-subs-cas-skbd:</b> 4.62 m2	
<b>Doors:</b> 1.48 m2	<b>Windows:</b> 0.00 m2	<b>Openings:</b> 4.45 m2	<b>Missing Walls:</b> 0.00 m2
<b>Floor:</b> 1.22 m2	<b>Ceiling:</b> 1.22 m2	<b>Perim (F):</b> 1.90 m	<b>Perim (C):</b> 2.63 m



**EXTERIOR PLAN: Exterior Plan**

Exterior Plan

## Subsidence Management Services

Yarmouth House, 1300 Parkway, Solent Business Park  
Whiteley, Hampshire PO15 7AE

Description	Quantity	Applied to	Per
<b>SCHEDULE: Building - duplicate (Messenger Construction Limited - Birmingham) Claim Ref. IFS-EIG-SUB-18-007396...</b>			
Approved			

**Exterior:** 163.23 m2  
**Subtractions:** 10.22 m2



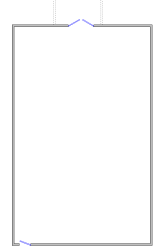
### FLOORPLAN: Floorplan 2

#### Exterior

1 Tower Scaffold (3.2m) - Each additional weeks hire required to work at higher level	1	EA
2 Crack repairs - Type 18 - Minor Cracks to Pointing - Rake out mortar joints along the line of cracks to 19mm deep. Repoint using a gauged mortar to a neat pointed finish Rake out and re-point stepped cracks.	20.00	m
3 Labourer - Labour Only Assist with working at heights	4	HR

#### Main hall

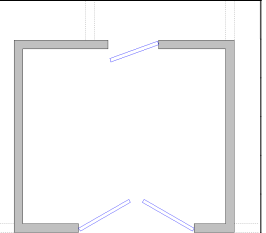
**Length:** 8.72 m    **Width:** 13.91 m    **Height:** 6.30 m Flat  
**Walls:** 285.14 m2    **Walls-subs:** 280.29 m2    **Walls-subs-cas-skbd:** 275.18 m2  
**Doors:** 4.85 m2    **Windows:** 0.00 m2    **Openings:** 0.00 m2    **Missing Walls:** 0.00 m2  
**Floor:** 121.30 m2    **Ceiling:** 121.30 m2    **Perim (F):** 42.88 m    **Perim (C):** 45.26 m



4 Tower Scaffold (3.2m) - Each additional weeks hire To work at higher levels in the hall.	1	EA
5 Crack repairs - Type 18 - Minor Cracks to Pointing - Rake out mortar joints along the line of cracks to 19mm deep. Repoint using a gauged mortar to a neat pointed finish Rake out and re-point stepped cracking.	20.00	m
6 Labourer - Labour Only To assist with working at heights.	4	HR
7 Crack repairs - Type 1 - Replacement of a single facing brick (matching of existing brick finish) - Cut out damaged brickwork and replace to match existing as closely as possible – single brick 3 x bricks require replacement as cracked but extra added for consequential damage removing the cracked bricks.	5	nr

#### Hallway

**Length:** 2.90 m    **Width:** 2.50 m    **Height:** 2.80 m Flat  
**Walls:** 30.24 m2    **Walls-subs:** 25.39 m2    **Walls-subs-cas-skbd:** 24.38 m2  
**Doors:** 4.85 m2    **Windows:** 0.00 m2    **Openings:** 0.00 m2    **Missing Walls:** 0.00 m2  
**Floor:** 7.25 m2    **Ceiling:** 7.25 m2    **Perim (F):** 8.42 m    **Perim (C):** 10.80 m



8 Crack repairs - Type 18 - Minor Cracks to Pointing - Rake out mortar joints along the line of cracks to 19mm deep. Repoint using a gauged mortar to a neat pointed finish Rake out and re-point stepped cracking mostly on stairway.	10.00	m
---	-------	---

## Subsidence Management Services

Yarmouth House, 1300 Parkway, Solent Business Park  
Whiteley, Hampshire PO15 7AE

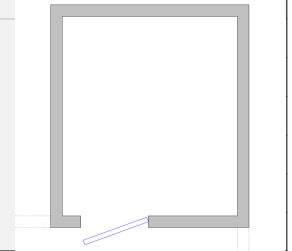
Description	Quantity	Applied to	Per
<b>SCHEDULE: Building - duplicate (Messenger Construction Limited - Birmingham) Claim Ref. IFS-EIG-SUB-18-007396...</b>			
Approved			

### Hallway(con't)

- |    |  |       |   |    |
|----|--|-------|---|----|
| 9  | Cement paint "Sandtex Matt" or equal - Apply 2 coats to brick, rendered or concrete surfaces<br>Exterior paint to replace on the exposed brick work. | 25.39 | W | m2 |
| 10 | Stair Scaffold - Allowance to erect and strike a stair scaffold, includes first day hire<br>To work over stairs                                      | 1     |   | EA |

### Cupboard

<b>Length:</b> 1.88 m	<b>Width:</b> 2.14 m	<b>Height:</b> 2.60 m Flat	
<b>Walls:</b> 20.90 m2	<b>Walls-subs:</b> 19.42 m2	<b>Walls-subs-cas-skbd:</b> 18.55 m2	
<b>Doors:</b> 1.48 m2	<b>Windows:</b> 0.00 m2	<b>Openings:</b> 0.00 m2	<b>Missing Walls:</b> 0.00 m2
<b>Floor:</b> 4.02 m2	<b>Ceiling:</b> 4.02 m2	<b>Perim (F):</b> 7.31 m	<b>Perim (C):</b> 8.04 m



- |    |  |       |   |    |
|----|--|-------|---|----|
| 11 | Trestles / podium step - Supply trestles / podium step to provide working platform<br>To work at higher levels.  | 1     |   | EA |
| 12 | Crack repairs - Type 18 - Minor Cracks to Pointing - Rake out mortar joints along the line of cracks to 19mm deep. Repoint using a gauged mortar to a neat pointed finish<br>Rake out and re-point stepped cracking. | 6.00  |   | m  |
| 13 | Cement paint "Sandtex Matt" or equal - Apply 2 coats to brick, rendered or concrete surfaces<br>Paint walls to exposed brickwork.  | 19.42 | W | m2 |